

# Blushield Tesla Plug-in Model

Instructions for use

Plug the Blushield Tesla Plug-in into an existing socket in a central part of the area to be protected, whether it be your home or your office. The area to be protected is 90 meters diameter from the point of plug-in. This model is ideal for a relatively large area like a home or office. As long as the Blushield Tesla Plug-in is left plugged in (indicated by blue LEDs at the bottom hole in the case) it will affect all people within the field range. A gauss meter will not indicate the actual neutralisation of the electrical fields as the Blushield Tesla works at a biological level, internal to the cell.

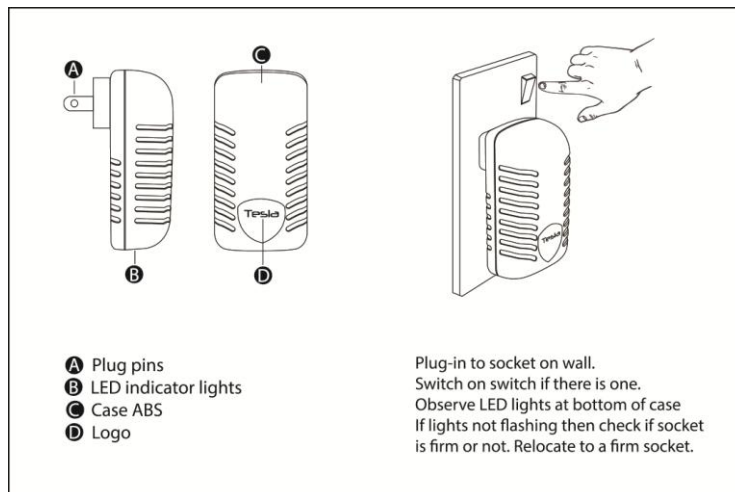
The Blushield Tesla will penetrate normal floors and walls (Gibraltar board or wooden). A normal size house would only require one unit. In multi storied office buildings more than one per floor maybe required depending on area to be covered. When deciding on a position, remember that it is designed to affect people not equipment, so place closer to people.

The Blushield Tesla is safe to use with computers and will not erase data as the Blushield is non-magnetic. The Blushield does not emit any electromagnetic fields so does not generate interference which might affect sensitive equipment, including pacemakers. Blushield complies with EMC emission standards EN 50082-1:1992 and EN 50081-1. Blushield Tesla meets electrical safety standard NZ/AS 3100.

If you sleep near a digital mains powered clock near the bed or use an electric blanket when you sleep, this will cause a disruption to your circadian rhythm (sleep pattern). It is best to remove, switch off or re-locate any such items in the room you sleep in. This will minimise exposure to electric fields during sleep time which is most important. Do not plug the Tesla Plug-in model in the room you sleep, the LED may be distracting and the field maybe too strong, plug the unit in at least 4 meters from where you are sleeping. Plug-in in the unit too close may disturb some peoples sleep.

Some people report that within the initial first few days after installing the Blushield they feel low in energy or tired. This is a transient condition and will pass within a few days. This is just the body adjusting to a new environment. Stick with it. Older people or persons who have poor health may take longer to adjust, in some cases up to 4-6 weeks. The Blushield is not an ionizer.

**Blushield does not remove EMF nor does it modify EMF, using an EMF meter will not indicate any change in the environment. Blood tests were used to determine the Blushield's effectiveness.**



This is not a therapeutic device and must not be sold as one. Any health benefits derived from the use of this device are purely consequential and no medical claims are stressed or implied.

The Blushield Tesla Plug-in is guaranteed against faulty parts or workmanship for a 1-year period from date of purchase. This does not cover wear and tear, neglect or misuse of the product. Warranty does not cover lightning strike or power surge, the Blushield Tesla Plug-in may need to be repaired after a power surge, in which case the customer has to pay any and all costs relating to the repair or replacement of the product.